

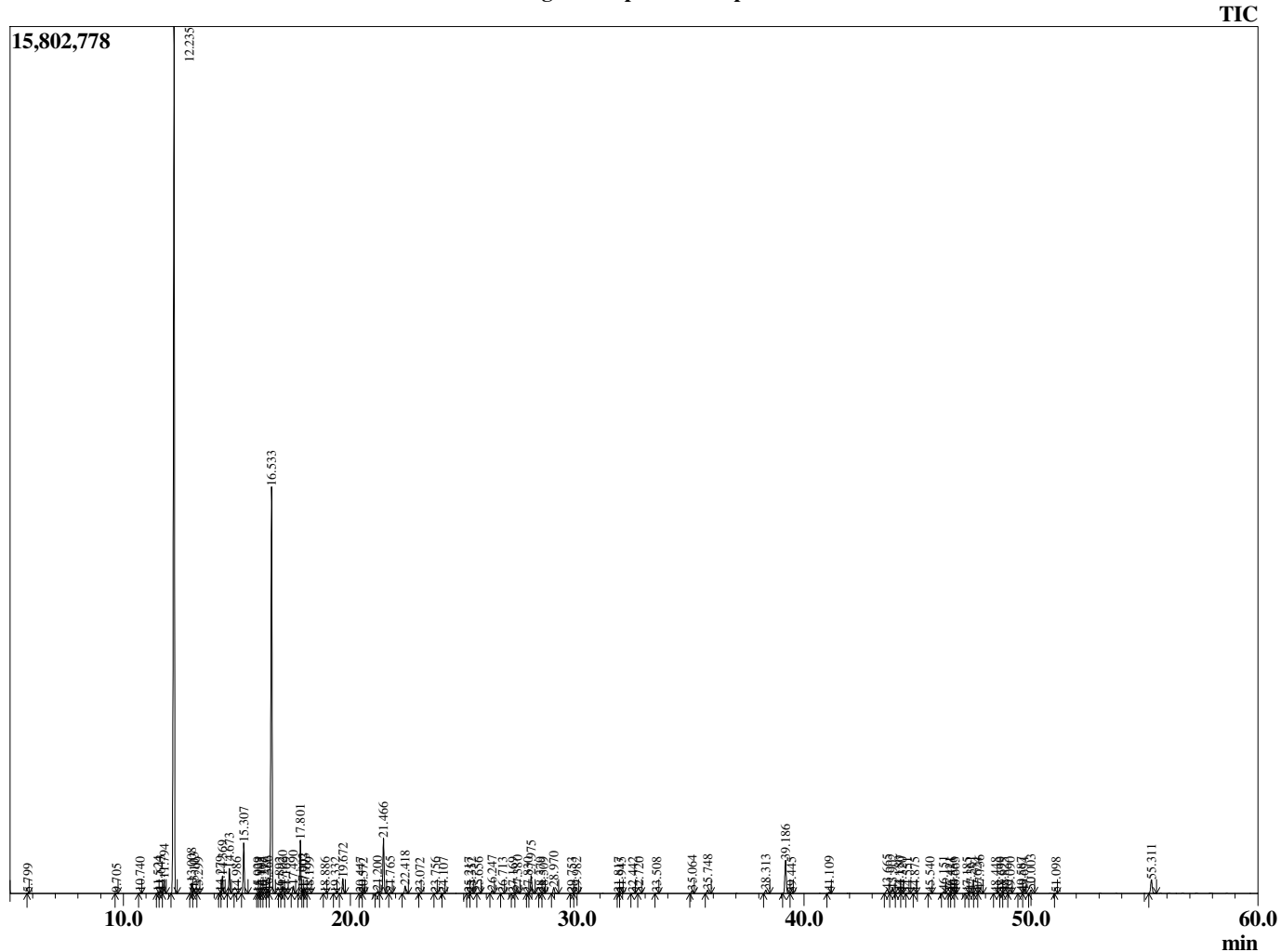
Sample Information

Sample Type : Essential Oil  
 Sample Name : Cupressus sempervirens :  
 Injection Volume : 0.10

Cypress Leaf  
 Lot# CRK21-KW  
 Country: Crete



Chromatogram Cupressus sempervirens



R.Time	Name	Area%
5.799	Toluene	0.01
9.705	Cyclofenchene	0.01
10.740	Bornylene	0.04
11.524	Hashishene	0.07
11.643	Tricyclene	0.12
11.794	alpha-Thujene	0.69
12.235	alpha-Pinene	49.86
13.008	alpha-Fenchene	0.55
13.103	Camphene	0.28
13.299	Thuja-2,4(10)diene	0.03
14.279	Unidentified	0.08
14.369	Sabinene	0.95
14.673	beta-Pinene	1.38
14.986	Unidentified	0.03
15.307	Myrcene	2.70
15.929	Unidentified	0.01
15.993	1-para-Menthene	0.02
16.105	alpha-Phellandrene	0.04
16.216	Pseudolimonene	0.04
16.366	alpha-Phellandrene	0.11
16.533	delta-3-Carene	24.51
16.892	1,4-Cineole	0.01
17.020	alpha-Terpinene	0.42
17.169	ortho-Cymene	0.04
17.490	para-Cymene	0.46
17.801	Limonene	3.08
17.902	beta-Phellandrene	0.27
17.993	1,8-Cineole	0.26
18.199	cis-beta-Ocimene	0.02
18.886	trans-beta-Ocimene	0.03
19.332	Unidentified	0.05
19.672	gamma-Terpinene	0.91
20.447	trans-Sabinene hydrate	0.02
20.572	Pinol	0.01
21.200	Isoterpinolene	0.12
21.466	Terpinolene	3.41
21.765	para-Cymenene	0.07
22.418	Linalool	0.48
23.072	Unidentified	0.01
23.756	alpha-Fenchol	0.01
24.107	cis-para-Menth-2-en-1-ol	0.01
25.217	trans-Pinocarveol	0.02
25.352	Unidentified	0.04
25.656	Camphor	0.07
26.247	Karahanaenone	0.18
26.713	para-Mentha-1,5-dien-8-ol	0.03
27.169	Thuj-3-en-2-one (Umbellulone)	0.04
27.380	Borneol	0.14
27.830	Unidentified	0.01
27.975	Terpinen-4-ol	1.23
28.379	para-Cymen-8-ol	0.04
28.509	Unidentified	0.03
28.970	alpha-Terpineol	0.41
29.753	Verbenone	0.02
29.982	Unidentified	0.02
31.817	Unidentified	0.01
31.945	Thymol methyl ether	0.02
32.442	Unidentified	0.02
32.720	Unidentified	0.02
33.508	Unidentified	0.03
35.064	Bornyl acetate	0.19

R.Time	Name	Area%
35.748	Isobornyl acetate	0.24
38.313	Unidentified	0.25
39.186	alpha-Terpinyl acetate	2.43
39.445	Eugenol	0.02
41.109	alpha-Copaene	0.09
43.665	alpha-Cedrene	0.37
43.902	beta-Caryophyllene	0.29
44.180	beta-Cedrene	0.11
44.320	Unidentified	0.01
44.551	beta-Copaene	0.03
44.875	cis-Thujopsene	0.04
45.540	cis-Murrola-3,5-diene	0.03
46.151	alpha-Humulene	0.12
46.421	Unidentified	0.02
46.556	cis-Cadina-1(6),4-diene	0.06
46.663	Unidentified	0.01
47.185	10-beta-H-Cadina-1(6),4-diene	0.04
47.361	trans-Cadina-1(6),4-diene	0.14
47.624	Unidentified	0.03
47.736	Germacrene D	0.22
48.448	Unidentified	0.05
48.699	Unidentified	0.05
48.825	alpha-Murolene	0.08
49.090	Unidentified	0.03
49.587	alpha-Alaskene	0.05
49.694	gamma-Cadinene	0.07
50.003	delta-Cadinene	0.25
51.098	alpha-Cadinene	0.01
55.311	Cedrol	1.07
		100.00